

# s@tGate

## **Version v10.5.1**

Under the concept that developing S@tGate is an ongoing process driven by the maritime ICT ever-changing needs, new version v10.5.1 is released with features that improve the service and add new functionalities to the platform.

Those new features and helpful tools are incorporated in new units and for the established ones, automatic update procedure will be followed.



# What's New

## Enhanced Access to the vessel via 1 Public IP



Due to the fact that Static Public IP address is not provided by Starlink, there are difficulties from shore to ship access for different type of applications. With OTESAT-Maritel vessels, regardless the number of satellite terminals and which terminal is active, one common OTESAT-Maritel Public IP address is offered to access your good vessel.

## Remote Tools

```
Available commands:
ncp ping rmp rmlslookup timesroute uptime topdup netwload

Bmp example: rmp 192.168.0.0/24
Topdup example: topdup -s eth0
Cncol running command via Ctrl + c

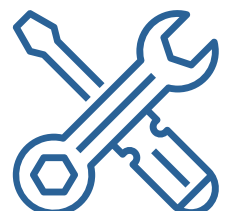
Ship's local networks are
eth0 eth3.110 eth0.113

Active gateway is
eth0

limited@satgate:~$
```

## Remote Tools

Critical troubleshooting can be performed via the s@tGate's remote console. There is no need for extra programs to be installed, rather than simple access to a web browser. Several useful tools can be used to check and troubleshoot the vessel LAN like ping, nmap (network scan), packet sniffer, live network load of the terminal. Moreover, it can be customized to meet customer's troubleshooting needs in the best way possible.





## Firewalling

- ❖ Full Firewall control by Company Admin roles.
- ❖ A set (or sets) of vessel rules can be cloned to one or multiple vessels without having to create them from scratch for each vessel.
- ❖ Firewall Rules can be created without having to determine specific ports.
- ❖ Optimization to default firewall setup template.
- ❖ Tracking and record keeping of changes made to firewall rules (changelog) for troubleshooting purposes.
- ❖ Changes for safer rule creation (established, related).
- ❖ Simpler presentation of bidirectional firewalling rules, keeping one direction for the user interface.
- ❖ Bulk deletion of firewall rules.
- ❖ Automatic deletion of corresponding firewalling rules when Services are being deleted.
- ❖ Smart and direct apply of new firewalling rules without any reboot of the system.
- ❖ Automatic completion of company and vessel name details during firewalling rules creation.

The screenshot shows two main sections: 'Services' and 'Firewall'.

**Services Section:**

- Buttons: Create Service, Clone Services, Sync to vessel.
- Company: All, Vessel: All.
- Search and Clone buttons.
- Clone Service(s) to Vessel(s):**
  - Select Source: From Company (TANKERS LTD), From Vessel.
  - Services: Config, Connectivity Check, Crew Internet (FW), Crew Internet (Damping), Dolphin FTP.
  - Select Destination: To Company (TANKERS LTD), To Vessels (multiple select).
  - CAUTION: You are about to clone the selected services across vessel(s).
  - Buttons: Clone, Close.

**Firewall Section:**

- Buttons: Create From Template, Create Rule, Export, Sync to vessel.
- Company: Select company, Vessel: Select vessel.
- Initialize: On boot.
- Search and Clone buttons.
- Table with columns: Service, Ports, Port, Interface, IP, Max Address, Chain, Endbit.
- Buttons: Assign to Service, Delete.

## Update firewall rule #12033

Fields with \* are required.

Service: DAMI RULES

Initialize \*: On boot

Chain \*: BYPASS

IN interface: FORWARD

Protocol: BYPASS

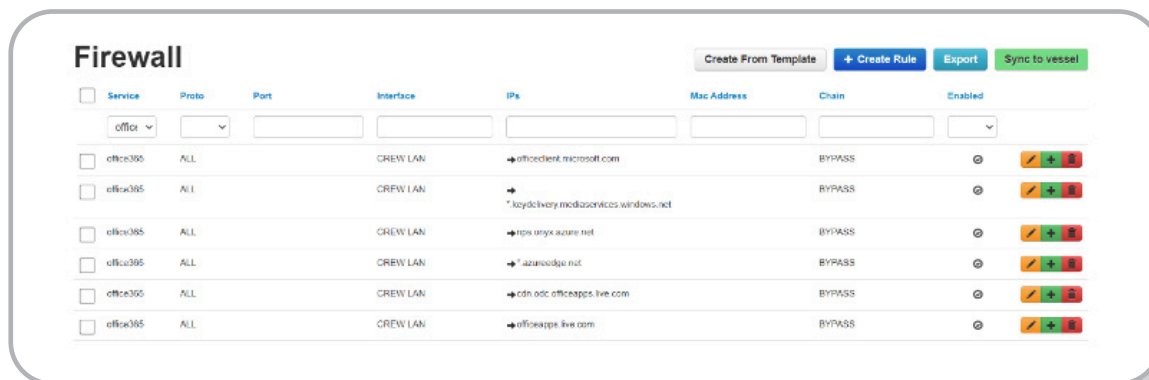
Destination ports: INPUT, OUTPUT, PREROUTING, POSTROUTING, PREROUTING MANGLE, PREROUTING REDIRECT, OUTPUT MANGLE

Source IPs: 0.0.0.0/0

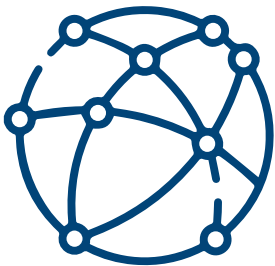
Domain: chat.killpc.com

Mac Address:

☐ Local rule



- ❖ Firewall can support rules to specific destination DOMAINS for vessel's LAN devices (source IPs). New 'Chain' field in the firewall setup menu has been added with the name "Bypass". The Domain name is then determined in the corresponding "Domain" field.
- ❖ Configuring ports with ranges and multiple IP addresses is now permitted in the same firewall rule.
- ❖ Change to source & destination IP control of firewall rules so that IP ranges to be accepted with "-".



## Networking, Interfaces, Security

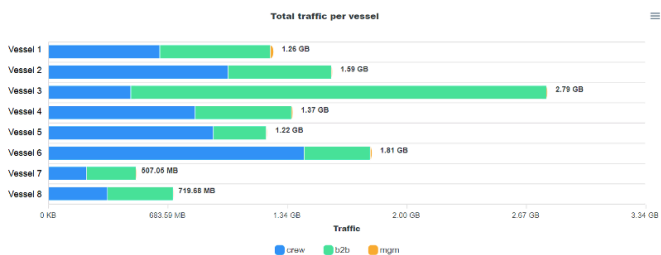
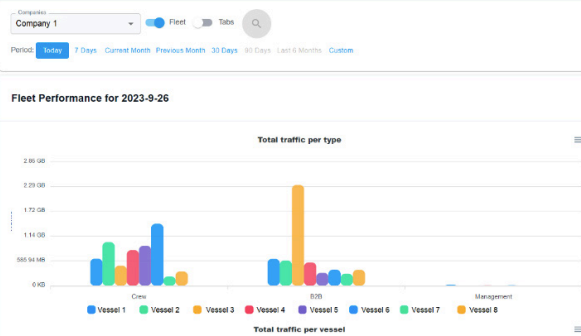
- ❖ Direct on-the-fly "synch" of interfaces, firewall rules and services from server to vessel.
- ❖ Optimized synchronization between vessels and server regarding interface status (online/offline).
- ❖ Optimization in the transmission of analytical Web Logs from vessel to server.
- ❖ Security optimization for "REMOTE TOOLS" access on board the vessels.
- ❖ Optimization in the automatic update procedure of new versions to the vessels.
- ❖ Improvement in the monitoring of resources of vessel's satgates.

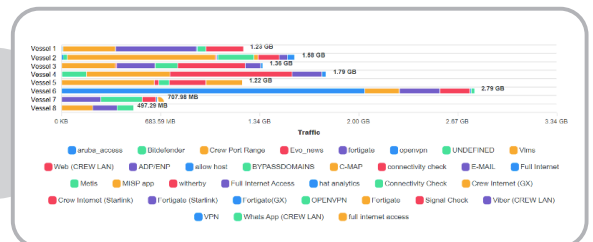
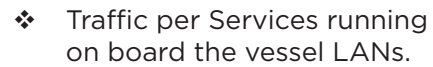
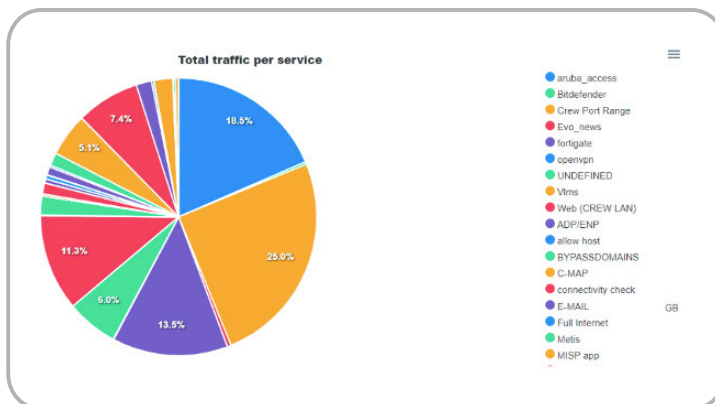
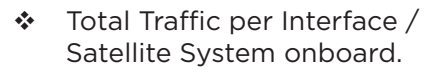
## Interfaces

+ Create interface Export Sync to vessel

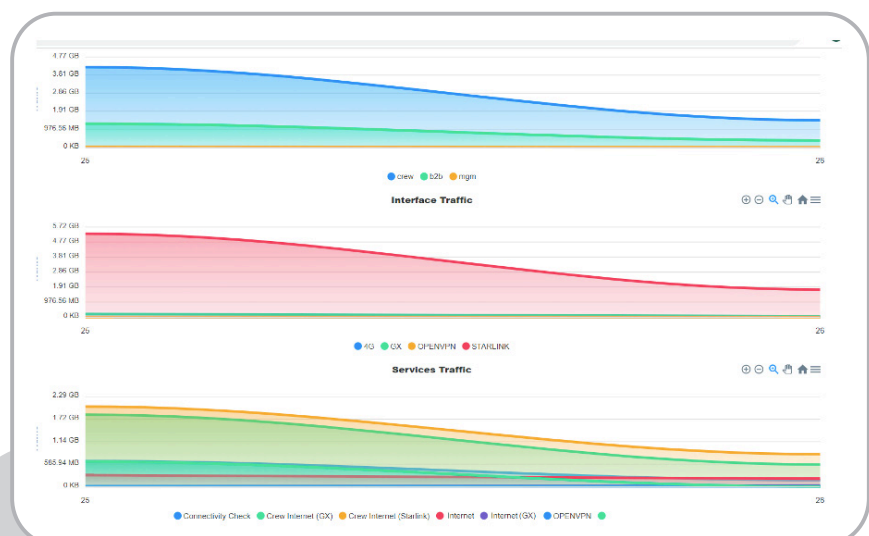
Displaying 1-10 of 10 results

Description	Interface	Type	IP	Router IP	Priority	Online
B2B	eth3	Local	172.16.33.210			
CREW LAN	eth2	Local	10.10.10.50			
SERVER LAN	eth4	Local	172.17.33.210			
STARLINK	eth7	Primary	198.95.145.205	10.50.0.4	1	
GX	eth1	Secondary	10.10.12.101	94.232.81.70	2	
FBB	eth1	Secondary	10.10.12.101	94.232.81.70	3	
4G	eth6	Secondary	192.168.2.254	10.50.0.4	5	

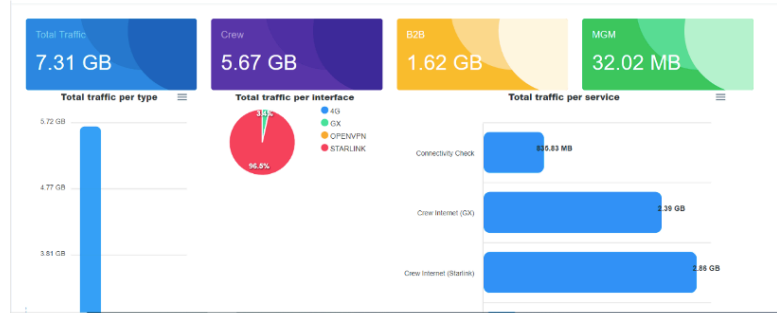




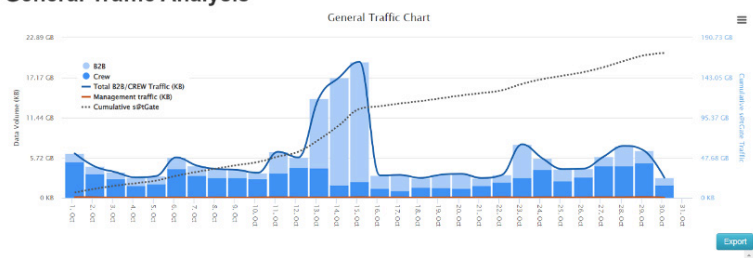
- ❖ Interface, Service and Network Traffic monitoring.



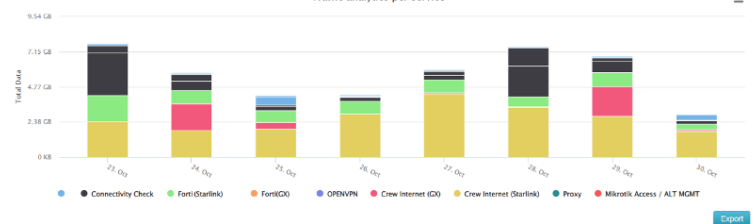
- ❖ Vessel Performance.
- ❖ General Traffic Analysis and per service.
- ❖ Crew Internet Voucher sales statistics.



### General Traffic Analysis



### Traffic analytics per service



### Fleet Voucher Sales for 2023-9-26



## Additional features

- ❖ Server Two-Factor-Authentication using SMS to user's mobile phone.
- ❖ Time limit per day has been implemented for crew users (for example, it is not permitted the crew to browse the internet for more than 4 hours per day).
- ❖ Daily, weekly, monthly usage limits can be determined for specific user accounts.
- ❖ A maximum number of active devices per user can be defined to improve the control over the simultaneous data usage on board. Restriction to the number of devices per crew or B2B users.



**Usage**

Role:

Displaying 1-6 of 6 results

Role	Account	Daily Volume	Daily Time	Daily Units	Weekly Volume	Weekly Time	Weekly Units	Monthly Volume	Monthly Time	Monthly Units	
Crew	N/A	9,31 TB	1 day(s)	9 999 999 999,99	9,31 TB	7 day(s)	9 999 999 999,99	9,31 TB	210 day(s)	9 999 999 999,99	
B2B	N/A	1,91 GB	1 day(s)	999 999,00	9,54 GB	7 day(s)	999 999,00	95,37 GB	210 day(s)	999 999,00	
Crew	crewtest	976,56 MB	6,944 day(s)	99 999,99	9,54 GB	6,944 day(s)	9 999,99	976,56 MB	69,444 day(s)	1 000 000,00	
B2B	agelos	9,31 TB	1 day(s)	9 999 999 999,99	9,31 TB	7 day(s)	9 999 999 999,99	30,00 GB	30 day(s)	9 999 999 999,99	
B2B	b2btest	4,88 MB	69,444 day(s)	999 999,99	4,88 MB	69,444 day(s)	999 999,99	4,88 MB	69,444 day(s)	5 000,00	
Crew	test2	3,05 GB	69 day(s)	1 000 000,00	28,61 GB	69 day(s)	5 000 000,00	47,68 GB	69 day(s)	10 000 000,00	